


**SUMMARY FOR INTERIOR DECORATION WORK OF  
AB BANK PATHER HAT BRANCH (SHIFTING).**

<b>Sl</b>	<b>Description of works</b>	<b>Amount</b>
A	CIVIL WORK	
B	MS & STAINLESS-STEEL WORK	
C	ALUMINIUM & GLASS WORK	
D	CARPET AND FLOOR TILES WORK	
E	CEILING WORK	
F	PAINT WORKS	
G	ELECTRICAL WORK	
H	SANITARY WORK	
I	DOOR WORK	
J	MISCELLANEOUS WORK	
K	NEW FURNITURE & FIXTURES FITTING WORK	
L	EXISTING FURNITURE & FIXTURES RE-FITTING WORK	
	<b>Total Amount</b>	

**Total amount in words:**

**SCHEDULE FOR INTERIOR DECORATION WORK OF  
AB BANK PATHER HAT BRANCH.**

SL	DESCRIPTION OF WORK	UNIT	QNTY.	UNIT PRICE	AMOUNT (TK.)
<b>A. CIVIL WORK</b>					
01	<b>5" Brick wall:</b> Construction of 5" Brick wall by 1st class brick with cement mortar (1:4) in exterior, interior wall including cleaning, soaking the bricks at least 24 hours before use and washing the sand etc.; all complete as per design and instruction of the Engineer-in-charge.	sft	1079		
02	<b>Reinforced Cement Concrete (R.C.C.) work:</b> Cement: sand: brick/stone chips (1:2:4) with reinforcement fabrication of 12mm deformed bar placing @ 6" c/c both way double layer and 28 days curing. All complete as per design and instruction of the authority/Engineer-in-charge.	cft	353		
03	<b>RCC work over door (Lintel):</b> Cement: sand: brick/stone chips (1:2:4) and placing the rebar as per design suggested by the authority/Engineer-in-charge.	rft	26		
04	<b>Plaster work:</b> Minimum ½" thick cement plaster (1:5) to wall, ceiling both inner and outer surfaces, finishing the corner and edges including washing of sand and curing at least for 7 days, all complete as per drawing and direction of the authority.	sft	2621		
05	<p><b>Cash Counter:</b> New Supply, fitting &amp; fixing of cash counter comprising of <b>R.C.C work (1:2:4)</b> sides and front support walls &amp; melamine board inner work top with drawer unit, <b>18mm marble work in front, customer top and side wall</b> of the counter etc. all complete as per approved detail drawing and design including supply of all necessary materials and charges etc.</p> <p>Components: a. <b>18mm artificial marble</b> b. 25mm melamine board as working top c. New supply Drawer unit-03 nos.</p>  <p><b>The counter must be identical to Gulshan Sub branch situated at Skymark, Level-2, 18 Gulshan Avenue, Gulshan-1.</b></p>	rft	17.5		
<b>Sub Total:</b>					

<b>B. MS &amp; STAINLESS-STEEL WORK</b>					
01	<b>Collapsible gate:</b> Supply, fitting, fixing of collapsible gate made with 1"x1"x1½" MS angle and 1"x1" flat bar, all complete including enamel paint as per design and instruction of authority/Engineer in charge.	sft	64		
02	<b>Rolling Shutter:</b> Supply, fitting & fixing of rolling shutter made with 1mm thick imported Nickel / Zinc coated plain sheet, 3mm thick guide U channel. All complete as per direction of the authority/Engineer-in-charge.	sft	72		
03	<b>M.S grill work:</b> New supply fitting/fixing of M.S grill which made of (1/2"x1/2") square bar 4"c/c both way inside of the curtain glass section with enamel paint finish, including all complete as per drawing and instruction of the authority/Engineer-in-charge.	sft	235		
<b>Sub Total:</b>					
<b>C. ALUMINUM &amp; GLASS WORK</b>					
01	<b>Glass Partition:</b> New Supply and fitting/fixing Glass partition with U-channel (Fu Wang/KAI Brand) and 10mm crystal clear glass, including all accessories, all complete as per drawing and instruction of the authority/Engineer-in-charge.	sft	151		
02	<b>Low height fabric with glass partition:</b> New supply, fitting & fixing low height aluminum frame fabric partition with glass which made of aluminum frame and fabric with 10 mm thick clear glass Low height (H - 4'-0") with necessary hardware etc. all complete as per drawing and instruction of the authority/Engineer-in-charge.	sft	72		
03	<b>Tempered Glass door:</b> New supply fitting/fixing of frameless glass door (size: 3'-0"x7'-0") made of 10mm thick tempered glass with all foreign made hardware/accessories such as stainless-steel handles (36" long uniformly rounded), Concealed auto-closer, stopper, lock etc.; all complete as per design/drawing and instruction of the authority.	nos	04		
04	<b>Curtain glass work:</b> New supply, fitting & fixing of 6 mm curtain glass with aluminum frame, Norton tape, structural sealant, gum & required accessories etc. all complete as per drawing and instruction of the authority/Engineer-in-charge.	sft	235		
<b>Sub Total:</b>					

<b>D. CARPET &amp; FLOOR TILES</b>					
01	<b>Floor tiles:</b> Supplying, fitting/fixing best quality Mirror polish (size: 24"x24") tiles of approved sample (Brand: RAK, Shopia DC-6) color & texture with sand (FM 1.2) cement mortar (1:4) base maintaining proper sole/level and raking out the joints with matching color cement/pigment, curing at least 3 days; all complete as per drawing, design and instruction of the authority/Engineer in charge.	sft			
02	<b>Toilet floor tiles:</b> Supplying, fitting/fixing best quality Chinese homogeneous mat polish (size: 24"x24") tiles of approved color & texture with sand (FM 1.2) cement mortar (1:4) base maintaining proper sole/level and raking out the joints with matching color cement/pigment, curing at least 3 days; all complete as per drawing, design and instruction of the authority/Engineer in charge.	sft	302		
03	<b>Wall Tiles:</b> Supplying, fitting/fixing best quality Chinese glazed wall tiles (size: 12"x24") of approved color & texture with sand (FM 1.2) cement mortar (1:3) base maintaining proper sole and raking out the joints with matching color cement/pigment, curing at least 3 days; all complete as per drawing, design and instruction of Engineer in charge.	sft	444		
04	<b>Floor Mat:</b> New supply, fitting & fixing of synthetic pvc floor mat ( <b>Light Blue/Ash/gray</b> ) all complete with approved quality and color including all complete as per drawing, design and instruction of Engineer in charge.	sft	125		
05	<b>Skirting:</b> Supplying, fitting/fixing wall tiles matching with floor tiles (4") with sand (FM 1.2) cement mortar (1:3) base maintaining proper sole and raking out the joints with matching color cement/pigment, curing at least 3 days; all complete as per drawing, design and instruction of the authority/Engineer in charge.	rft	310		
<b>Sub Total:</b>					
<b>E. CEILING</b>					
01	<b>Perforated metal false ceiling:</b> Supply, fitting & fixing of imported perforated metal false ceiling (24"x24") over powder coated T-bar of section 1" x 1.5" and L-angle of section 1"x 1" at edge as per drawing, design and instruction of the authority/ Engineer in charge.	sft	962		
02	<b>Fixed ceiling:</b> Supplying, fitting/fixing false ceiling made of Gypsum Board suspended from RCC ceiling by 12SWG GI wire, screwed to RCC slab & <b>including plastic paint</b> etc. all complete as per drawing/design & instruction of the authority/Engineer-in-charge.	sft	755		

03	<b>Decorative Louver ceiling:</b> Supplying, fitting/fixing of decorative louver ceiling which made of 12mm gorjon ply board suspended from RCC ceiling by 12SWG GI wire, screwed to RCC slab & <b>including lacquer paint</b> etc. all complete as per drawing/design & instruction of the authority/Engineer-in-charge.	sft			
04	<b>Gypsum board false ceiling:</b> Supplying, fitting/fixing false ceiling made of (24"x24"x12) mm Gypsum Board (Sakura), forming 2'x2' grid by powder coated T bar (1"x1½") & L angle (1"x1") suspended from RCC ceiling by 12SWG GI wire, screwed to RCC slab etc. all complete as per drawing/design & instruction of the authority/Engineer-in-charge.	sft	310		
05	Drop ceiling over 8'-0" height glass partition	rft	32		
06	<b>Gypsum board Partition:</b> Supply fitting fixing gypsum board partition made of 12 mm gypsum board, <b>C-channel, U-channel</b> and screwed to RCC slab <b>including plastic paint</b> etc. all complete as per drawing/design & instruction of the authority/Engineer-in-charge.	sft	85		
07	<b>Gypsum board Paneling:</b> Supply fitting fixing gypsum board paneling made of 12 mm gypsum board, <b>C-channel, U-channel</b> and screwed to RCC slab <b>including plastic paint</b> etc. all complete as per drawing/design & instruction of the authority/Engineer-in-charge.	sft	151		
08	<b>Aluminum Composite panel work:</b> New supply, fitting & fixing of Aluminum Composite panel including framing for column paneling work enhancing of interior design. 4mm thick Red color ACP, Brand: ALCO TIGER/ALCO BEST/ SUBLINE. Main Frame 46 mm x 20 mm MS box and fitting angel: 20 mm x 20mm Thickness: 1.2 mm etc. all complete as per direction of the authority of AB Bank.	sft			
<b>Sub Total:</b>					
<b>F. PAINT</b>					
01	<b>Plastic paint (roller finish):</b> Plastic paint (Berger brand) of approved color to/on plastered and others surfaces minimum 3 coats by roller finish after necessary lime putty work, cleaning, sand papering the base surfaces of wall treatment, including supply of all materials etc. all complete as per instruction of the authority/Engineer-in-charge.	sft	4220		

02	<b>Enamel paint:</b> Enamel paint (Berger brand) of approved color minimum 3 coats by spray/brush finish after necessary putty work, cleaning, sand papering the surfaces, treatment, including supply of all materials etc. all complete in all respect as per instruction of the authority/Engineer-in-charge.	sft	1520		
<b>Sub Total:</b>					
<b>G. ELECTRIC WORK</b>					
01	<b>TUBE LIGHT (SINGLE):</b> New supply, fitting & fixing of Led 18-watt T5 light (Brand: PASHA) including all accessories, all complete as per drawing and direction the authority/Engineer in-charge.	nos	51		
02	<b>Down light:</b> Supply, fitting & fixing of locally available 18 watt 6" LED down Light ( <b>Brand: PASHA</b> ) of approved color & size including conceal type shade of approved quality with all other necessary accessories etc. all complete up to testing & commissioning as per full satisfaction of the authority i.e. AB Bank PLC.	nos	27		
03	<b>Panel Light:</b> Supply, fitting & fixing of- 2' x 2' locally available 48-watt Panel light ( <b>Brand: PASHA, Warranty-02 years</b> ) of approved color & size of approved quality with all other necessary accessories etc. all complete up to testing & commissioning as per full satisfaction of the authority i.e. AB Bank PLC.	nos	25		
04	<b>Led Spot light:</b> Supply, fitting & fixing of locally available Led spot light ( <b>Brand: PASHA</b> ) of approved color & size of approved quality with all other necessary accessories etc. all complete up to testing & commissioning as per full satisfaction of the authority i.e. AB Bank PLC.	nos			
05	<b>Exhaust Fan:</b> Supply, fitting/ fixing 8" diameter exhaust Fan (National deluxe/ equivalent) with electrical connection for toilet & pantry; all complete as per drawing and direction of the authority/Engineer in-charge.	nos	03		
06	<b>Wall Mounted Fan:</b> Supply, fitting/ fixing wall mounted Fan (National deluxe/ equivalent) with electrical connection for pantry & locker room all complete as per drawing and direction of the authority/Engineer in-charge.	nos	03		
07	<b>PVC PIPE WORK:</b> PVC piping work for electrical, networking and telephone wiring				
	a) 3/4" dia PVC Pipe (with wall cutting and laying of pipe)	rft	550		
	b) 1" dia PVC Pipe (with wall cutting and laying of pipe)	rft	410		
	c) 3/4" dia flexible Pipe (do)	rft	350		
	d) 1" dia flexible Pipe (do)	rft	280		
08	<b>MDB/ SDB BOARD:</b> As per requirement of site	nos	02		

09	<b>LEGRAND BRAND SWITCH:</b>				
	a) 1 Gang (1 way) switch	nos			
	b) 2 Gang (1 way) switch	nos	02		
	c) 3 Gang (1 way) switch	nos	05		
	d) 4 Gang (1 way) switch	nos	07		
	e) D.P switch for signboard	nos	02		
10	<b>LEGRAND BRAND SOCKET:</b>				
	a) 5A, 2pin socket	nos			
	b) 13A, 3 pin socket (universal)	nos	25		
11	<b>Circuit breaker: (ABB, Italy)</b>				
	a) 125A TP MCCB	nos			
	b) 63A TP MCCB	nos	02		
	c) 32A TP MCB	nos	04		
	d) 10A - 20A SP MCB	nos	22		
12	<b>Main electrical cabling work: (BRB/Paradise)</b>				
	a) 1C X 1.5 rm BYA cable	coil	11		
	b) 1C X 2.5 rm BYA cable	coil	07		
	c) 1C X 4.0 rm BYA cable	coil	06		
	d) 4C X 25.0 rm BYA cable	meter	120		
13	<b>EARTH CONTINUITY CONDUCTOR</b>				
	a) 1.5 re BYA (Green)	coil	05		
	b) 2.5 mm <sup>2</sup> BYA (Green)	coil	04		
	c) 4.0 mm <sup>2</sup> BYA (Green)	coil	02		
	d) 25.0 mm <sup>2</sup> BYA (Green)	meter			
14	<b>AC re-fitting work:</b> Existing AC re-fitting work with opening, shifting, control and power wiring, necessary MS angle framing, refrigerant piping, drain piping, with necessary insulation (compressor change, Gas charge if required) etc. and connected to the outdoor unit. Supply of vibration isolator and hanging with Hilti threaded rods, Hilti rawl bolts, nuts etc. all complete as per instruction of the Engineer In-Charge. <b>1.5 Ton AC- 05 Nos</b> <b>2.5 Ton AC- 04 Nos</b>	nos	09		
15	<b>AC Indoor unit paint work:</b> Existing ACs indoor unit spray painting work with necessary materials etc. all complete as per instruction of the Engineer In-Charge.	nos	09		
16	Supplying and installation of Telephone/PABX <b>wiring</b> with Legrand brand or higher quality <b>telephone socket</b> , conceal in wall and also surface on false ceiling with band, socket, steel conceal box, accessories supply and fitting fixing everything all complete as per drawing and direction of the authority/Engineer in-charge.	job	01		
17	Supply & installation of burglar alarm all complete as per drawing and direction of the authority/Engineer in-charge				
	a. Burglar alarm b. Tele wiring for burglar alarm c. Extra switch for burglar alarm (Manager desk, OM desk, Head teller, Teller counter desk)	job	01		

18	<b>Earthing Work</b> with 100% cooper wire necessary boring supply and fitting fixing everything all complete as per drawing and direction of the authority/Engineer in-charge. <b>Mentionable here that the resistance must be less than 1Ω.</b>	Job	01		
				<b>Sub Total:</b>	
<b>H. SANITARY WORK</b>					
01	<b>Commode:</b> Supply, fitting & fixing of Commode with Lowdown of approved color (Brand: RAK, Model: Karala) Flush Type: Dual Flush, Color: Alpine White, Trap Type: S Trap, Trap way Type: Concealed, Seat Cover Options: ABS & Urea, Bowl Shape: Oval, Soft Close: Yes, Dimensions: 685 x 360mm, Weight: 32Kgwith all fitting accessories/materials, all completed as per drawing and direction of the authority/Engineer in charge.	nos	02		
02	<b>Pedestal Wash basin:</b> Supply, fitting & fixing of wash basin (brand: RAK) suite: RAK Karala, type: pedestal, dimensions: 500 x 406 mm, weight: 21 kg, color: green, shape of basin: oval, overflow hole: yes of approved color with all fittings/accessories, i.e. flexible connector pipe, waste water pipe, iron arms etc. all completed as per drawing and direction of the authority/Engineer in charge.	nos	02		
03	<b>Counter Wash basin:</b> Basin counter R.C.C casting with supplying, fitting & fixing 18 mm imported marble with supply & fixing of wash basin (Brand: RAK) Model: Jessica in wash basin, wash basin Drop in dimensions: 530 x 435 mm Color: alpine white shape of basin: oval of approved color with all fittings/accessories, i.e. flexible connector pipe, waste water pipe, iron arms etc. all completed as per drawing and direction of the authority/Engineer in charge.	rft			
04	<b>Soap case:</b> Supply, fitting & fixing of best quality soap case (Nazma/Sattar).	nos	03		
05	<b>Towel rail:</b> Supply, fitting & fixing of best quality towel rail.	nos	02		
06	<b>Paper holder:</b> Supply, fitting & fixing of best quality soap case (Nazma/Sattar).	nos	02		
07	<b>TOILET SHOWER:</b> Supply, fitting & fixing of best quality toilet shower (Nazma/Sattar).	nos	02		
08	<b>Mirror:</b> Supplying, fitting & fixing of best quality Mirror & Glass tray with all necessary accessories all completed as per drawing and direction of the Engineer in charge.	sft	20		
09	<b>SS Sink:</b> Sink counter R.C.C casting with supplying, fitting & fixing 18 mm imported marble & SS Sink (Singapore-Ocean) with all necessary accessories, i.e. flexible connector pipe, waste water pipe and iron arms etc. all completed as per drawing and direction of the authority/Engineer in charge.	rft	7.5		





10	<b>Angle stop cock:</b> (Nazma/Sattar).	nos	07		
11	<b>Pillar cock:</b> (Nazma/Sattar).	nos	02		
12	<b>Bib cock:</b> (Nazma/Sattar).	nos	01		
13	<b>Sink cock:</b> (Nazma/Sattar)	nos	01		
14	<b>Grating (3"-5"), UPVC</b>	nos	03		
15	<b>Sanitary piping</b> with 4", 2",1.5",1",3/4",1/2" dia upvc pipe etc. all completed as per drawing and direction of the authority/Engineer in charge.	job	01		
<b>Sub Total:</b>					
<b>I. DOOR WORK</b>					
01	<b>Flush Door (with Frame):</b> Supplying & fitting/fixing Wooden Flush Door made of Garjan veneered particle board shutter (Star brand) & (5"x2½") Gamari wood frame including Hinge (Brass), Lock (Handle-Taiwan), SS Knob/Handle (Taiwan), Tower bolt (brass), all expose surfaces finished by enamel paint & at hidden faces pasted anti corrosive chemicals such as Enamel paint/Tar/ Soil Oil etc.; all completed as per drawing/design and direction of the authority/ Engineer-in-charge.				
	<b>a. Door Size-2'-6"x7'-0"</b>	nos	03		
	<b>b. Door Size-3'-0"x7'-0"</b>	nos	03		
02	<b>Vault room Door shifting:</b> Opening & Re-fitting/fixing of <b>vault &amp; locker room</b> door from existing premises to new premises including all complete as per drawing, design & direction of the authority/Engineer-in-charge.	nos	01		
03	<b>Door Top closer:</b> Supplying & fitting/fixing imported standard quality door closer all completed as per drawing/design and direction of the authority/ Engineer-in-charge.	nos	01		
<b>Sub Total:</b>					



<b>J. MISCELLANEOUS WORK</b>					
01	<b>Roller blinds:</b> Supplying, fitting/fixing of imported best quality roller blinds of approved color with all imported accessories e.g. aluminum head rail, pvc coupling cod controlling chain, bottom weight bar etc. all complete as per design/sample and instruction of authority/Engineer-in-charge.	sft			
02	<b>Vertical blinds:</b> Supplying, fitting/fixing of imported best quality 5” wide vertical blinds of approved color with all imported accessories e.g. aluminum head rail, pvc coupling cod controlling chain, bottom weight plate, bottom chain all complete as per design/sample and instruction of authority/Engineer-in-charge.	sft	275		
<b>Sub Total:</b>					

<b>K. NEW FURNITURE &amp; FIXTURES FITTING WORK</b>					
01	<b>MANAGER TABLE WITH SIDE UNIT:</b> New supply, fitting & fixing of manager table 1800mm x 750mm table which made of melamine board ( <b>Partex star premium quality-White Beach</b> ) having side unit (3’-2” x 1’-4”) & computer wire management system incorporated on top etc. all complete as per instruction of the Engineer In-Charge.	nos	01		
02	<b>MANAGER CHAIR:</b> New supply, fitting & fixing of Manager’s chair with fabric seat & back support, high quality moving wheel with base and hand rest with <b>05 years replacement guarantee</b> approved sample, quality and color including all complete as per direction of the authority in charge. The mentioned chair should be purchased from our preferred vendor Navana Furniture Ltd. <b>Chair code: FCH 9029</b> sample photo attached.	nos	01		



03	<p><b>OPERATION MANAGER TABLE WITH SIDE UNIT:</b> New supply, fitting &amp; fixing of operation manager table of 1500mm x 675mm which made of 25mm melamine board (<b>Partex star premium quality-White Beach</b>) having side unit (3'-2" x 1'-4") with necessary computer wire management system incorporated on top etc. all complete as per instruction of the Engineer In-Charge.</p>	nos	01			
04	<p><b>Officer Table with side unit (Table Size: L-4'-3", W-2'-3"; Side unit size: 3'-2"x2'-6"x16"):</b> New supply, fitting &amp; fixing of officer's table which made of 25mm melamine board (<b>Partex star premium quality-White Beach</b>) having side unit (3'-2" x 1'-4") with necessary computer wire management system incorporated on top etc. all complete as per instruction of the Engineer In-Charge.</p>	nos	03			
05	<p><b>VISITOR CHAIR:</b> New supply, fitting &amp; fixing of visitor chair with fabric seat &amp; back support, high quality s.s fixed leg with base and hand rest with <b>05 years replacement guarantee approved sample</b>, quality and color including all complete as per direction of the authority in-charge. The chair seat fabric will be black and back fabric will be red color. The mentioned chair should be purchased from our preferred vendor Navana Furniture Ltd. <b>Chair code: FCV-9014 SPL</b> sample photo attached.</p>	nos	11			
	06	<p><b>OFFICER CHAIR:</b> New supply, fitting &amp; fixing of executive officer with fabric seat &amp; back support, high quality moving wheel with base and hand rest with <b>05 years replacement guarantee approved sample</b>, quality and color including all complete as per direction of the authority in-charge. The mentioned chair should be purchased from our preferred vendor Navana Furniture Ltd. <b>Chair code: FCM 9018 SPL</b> sample photo attached.</p>	nos	07		

					
07	<b>Low Height cabinet (H-2'-6", D-1'-4"):</b> New supply, fitting & fixing of <b>Low Height cabinet (H-2'-6", D-1'-4")</b> which made of 18 mm melamine board ( <b>Partex star premium quality-White Beach</b> ) with all complete as per drawing, design & direction of the authority/Engineer-in-charge.	sft	152		
08	<b>Full Height Cabinet (H-8'-0", D-1'-4"):</b> New supply, fitting & fixing of <b>Full Height cabinet (H-8'-0", D-1'-4")</b> which made of 18 mm melamine board ( <b>Partex star premium quality-White Beach</b> ) with necessary fitting accessories etc. all complete as per drawing, design & direction of the authority/Engineer-in-charge.	sft	210		
09	<b>Steel Rack:</b> New supply, fitting & fixing of steel rack which made of (37.5x37.5x5) mm M.S angle with Heat paint finish with necessary fitting accessories etc. all complete as per drawing, design & direction of the authority/Engineer-in-charge. <b>Rack size-4'-0"x8'-0"-04 nos</b>	nos	03		
10	<b>Dining table:</b> New supply, fitting/fixing of dining table (L-7'-0"x2'-0") which made of 18 mm melamine board ( <b>Partex star premium quality-White Beach</b> ) top with fitting angle with necessary others etc. all complete as per instruction of the Engineer In-Charge.	rft	7.5		
11	<b>Photocopy &amp; Printer table:</b> New supply, fitting & fixing of photocopy table (L-3'-4", W-2'-4") which made of 18 mm melamine board (Partex star premium quality-White Beach) with proper cable management system etc. all complete as per instruction of the Engineer In-Charge.	nos	01		
12	<b>Cheque writing top:</b> New supply, fitting & fixing of cheque writing top (L-4'-0", W-1'-0") with 10 mm crystal clear glass including all accessories etc. all complete as per drawing and instruction of the authority/Engineer-in-charge.	rft	04		
13	<b>Single Sitter waiting sofa:</b> New supply, fitting & fixing of <b>single sitter</b> waiting sofa which made of high-quality fabric with back support with approved sample, quality and color Warranty: One year (01) etc. all complete as per drawing	nos			

	<p>and instruction of the authority/Engineer-in-charge.</p> 				
14	<p><b>Double Sitter waiting sofa:</b> New supply, fitting &amp; fixing of double sitter waiting sofa which made of high-quality fabric with back support with approved sample, quality and color Warranty: One year (01) all complete as per drawing and instruction of the authority/Engineer-in-charge.</p> 	nos	02		
15	<p><b>Tea table:</b> New supply, fitting &amp; fixing of tea table (L-3'-0" xW-1'-6") which made of (1.5"x1.5") MS box leg with heat paint finishing 18 mm melamine board (Partex star premium quality-White Beach) top with necessary accessories etc. all complete as per instruction of the Engineer In-Charge.</p>	nos	02		

					
<b>Sub Total:</b>					

**SCHEDULE FOR INTERIOR DECORATION WORK OF  
AB BANK PATHER HAT BRANCH.**

<b>L. EXISTING FURNITURE &amp; FIXTURES RE-FITTING WORK</b>					
01	<b>Steel Almirah/M.S Rack shifting work:</b> Shifting and re-fitting of existing steel almirah/M.S Rack at safe place with all complete as per drawing, design & direction of the authority/Engineer-in-charge. Mentionable here that the almirah/rack will be different size.	sft	140		
02	<b>Full Height Cabinet: Shifting, repairing &amp; re-fitting/fixing</b> of full Height cabinet (H-8'-0", D-1'-4") made of 18 mm melamine board graphite color with all complete as per drawing, design & direction of the authority/Engineer-in-charge. Existing cabinet back side 6mm ply need to be replace with necessary accessories.	sft	270		
03	<b>Iron safe shifting:</b> Shifting and re-fitting/fixing of vault & locker room iron safe from existing premises to new premises at a safe place with all complete as per drawing, design & direction of the authority/Engineer-in-charge	nos	02		
04	<b>Fire extinguisher fitting:</b> Shifting and re-fitting of existing fire extinguisher from existing premises to the new premises at a safe place with all complete as per drawing, design & direction of the authority/Engineer-in-charge	nos	08		
05	<b>Chair shifting:</b> Shifting and re-fitting/fixing of existing officer's & visitor chair from existing premises to new premises at a safe place with all complete as per direction of the authority/Engineer-in-charge	job			
<b>Sub Total:</b>					

## **Terms & Conditions:**

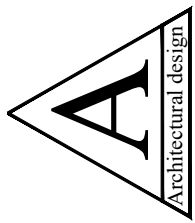
1. **Currency:** Price must be quoted in Bangladeshi Taka (BDT).
2. **VAT and TAX:** Quoted price must be inclusive of VAT and TAX as per government rules. Bill will be paid after deducting VAT and TAX as per Govt. rules of Bangladesh.
3. **Validity of the offer:** The proposal shall remain open and valid for a period of at least 45 (Forty-Five) days from the specified closing date indicated in the RFP for receipt of proposals. Your proposal should indicate that it will remain valid for this period. If your proposal is accepted during this period, the price quoted in your proposal must remain unchanged for the entire period of the resulting contract.
4. **Submission of offer:** Proposal/offer is to be submitted in sealed envelope which will be dropped in the Tender Box at level-2, AB Bank HO, The Skymark, 18 Gulshan Avenue, Gulshan-1, Dhaka-1212 **by 12:30 pm on April 24, 2025**. The following wordings: **“Schedule for Interior Decoration work of AB Bank Pather Hat branch (shifting)”** must be clearly written at the top of the envelope.
5. **Supervision:** Bank will supervise the interior fit-out work and will also check the quality and workmanship of the work. In the event of supply of any materials which do not match with the specified specifications or of substandard quality, the bank reserves the right for outright rejection of the goods and the supplier will have to take back and remove those at their own cost and will replace with acceptable quality materials within the shortest possible time from the date of rejection, without any extra cost or compensation.
6. **Workmanship Guarantee:** The Contractor is liable to a workmanship guarantee for a period of **six (06) months**. During this period of six months if any work done by the Contractor at his own cost. If not, the defective work will be done/repaired through other agencies and the cost will be borne by the contractor.
7. **Authorized Signature on proposal:** Complete proposal/offer must be signed with date by the authorized representative of the company.
8. AB Bank PLC reserves the right to accept or rejection the proposal /offer without assigning any reasons thereof.
9. Manipulation or any kind of unusual approach or failure to submit the proposal/offer within stipulated time frame will be treated as “Disqualification” to participate in the bidding.
10. **Workmanship standards:** AB Bank PLC reserves the right to accept or reject any part of the work done by the contractor for poor workmanship or low standard of construction materials provided.
11. **Sample Approval:** AB Bank will approve materials prior to use/installation of any materials by the successful bidder at the premises.
12. **Quality of work:** Work to be completed with standard specification and high-quality finishing.

13. **Additional work beyond scheduled work:** No additional work beyond the schedule is allowable unless written instruction from Bank. Bank will not entertain any such bills at the time of settlement of bill.
14. **Eligibility of submission:** Please submit the below mention document along with the schedule:
- a. Detail organization structure as per hierarchy including total number of technical / operational and administrative staffs
  - b. Up-to-date Trade License
  - c. TIN Certificate
  - d. VAT registration certificate
  - e. Up-to-date TAX payment receipt
  - f. Copy of work order with other organization
  - g. Experience certificate
  - h. Work completion certificate with other organization
  - i. Bank statement (Last 1 year) of the firm
  - j. Firm's balance sheet and statements of overall turnover
  - k. List of authorized persons of the company with copy of NID whom shall be contacted for subsequent correspondence by the Bank for issues after work order

If you fail to submit any of the documents mentioned above your submission will be treated as rejected.

**All of you are requested to visit physically at AB Bank Pather Hat branch (Contact address: Pather Hat Branch, Khayez Shopping Center (2nd Floor), Patherhat, Noyapara, Raozan) before submitting the quotation. Please contact with the Branch Manager (Cell- 01813506972) should you have any queries or require any further information.**





Project  
INTERIOR DECORATION  
LAYOUT PLAN FOR  
SHIFTING OF AB BANK  
PATHERHAT BRANCH

Location

Drawing  
PROPOSED LAYOUT  
PLAN OF  
1st FLOOR  
**AREA-SFT**

Date  
**07/04/25**

