

Schedule for construction and interior decoration work at level-9, AB Bank HO, BCIC Bhaban

SL	DESCRIPTION OF WORK	UNIT	QNTY.	UNIT PRICE	AMOUNT (TK.)
1	Dismantling of glass partition work: Dismantling of existing glass low & full height glass partition work and others (as instructed) carefully. These also include removal of the debris by the contractor to a suitable place. Precaution should be taken for the safety of other services (Electric, Machine, Hydraulic etc.) during dismantling removing & cleaning work. Mentionable here that before submitting this you are requested to physically visit the premises meticulously. Also mentionable that we will re-use few glasses as low and full height partition.	sft	1245		
2	Re-fitting/fixing of full height glass partition: Opening & Re-fitting/fixing of full height glass partition by using existing 10 mm thick glass and new supply of U-channel (Fu Wang/KAI Brand) and including all accessories, all complete as per drawing and instruction of the authority/Engineer-in-charge.	sft	1245		
3	Glass Partition: New Supply and fitting/fixing of full height glass partition with U-channel (Fu Wang/KAI Brand) and 10mm crystal clear glass, including all accessories, all complete as per drawing and instruction of the authority/Engineer-in-charge.	nos	950		
4	Tempered Glass door: Opening & Re-fitting/fixing of frameless glass door by using existing (size: 3'-0"x7'-0") 10mm thick tempered glass door with supply of new door closer all foreign made hardware/accessories such as stainless steel handles (24" long uniformly rounded), Concealed auto-closer, stopper, lock etc.; all complete as per design/drawing and instruction of the authority.	nos	8		

Schedule for construction and interior decoration work at level-9, AB Bank HO, BCIC Bhaban

5	Tempered Glass door: New supply fitting/fixing of frameless glass door (size: 3'-0"x7'-0") made of 10mm thick tempered glass with all foreign made hardware/accessories such as stainless steel handles (36" long uniformly rounded), Concealed auto-closer, stopper, lock etc.; all complete as per design/drawing and instruction of the authority.	nos	5		
6	Floor carpet: Supply & fitting/fixing of best quality 5mm synthentic floor carpet which fixing water bound glu aintaining proper level and joints approved sample etc. all complete as per drawing, design and instruction of the authority/Engineer in charge.	sft	1250		
7	Toilet floor tiles dismantling: Existing toilet floor tiles dismantling and removal of debris at suitable distance etc. all complete as per instruction of authority in-charge.	job	1		
8	Toilet floor tiles: Supplying, fitting/fixing best quality Chinese homogeneous mat polish (size: 24"x24") tiles of approved color & texture with sand (FM 1.2) cement mortar (1:4) base maintaining proper sole/level and raking out the joints with matching color cement/pigment, curing at least 3 days; all complete as per drawing, design and instruction of the authority/Engineer in charge.	sft	750		
9	Toilet wall tiles dismantling: Existing toilet wall tiles dismantling and removal of debris at suitable distance etc. all complete as per instruction of authority in-charge.	job	1		
10	Toilet wall tiles: Supplying, fitting/fixing best quality Chinese homogeneous mat polish (size: 12"x24") tiles of approved color & texture with sand (FM 1.2) cement mortar (1:4) base maintaining proper sole/level and raking out the joints with matching color cement/pigment, curing at least 3 days; all complete as per drawing, design and instruction of the authority/Engineer in charge.	sft	1880		

Schedule for construction and interior decoration work at level-9, AB Bank HO, BCIC Bhaban

11	Floor Tiles: Supply & fitting/fixing of best quality Chinese homogeneous mirror polish tiles (size: 16"x16") with mortar (1:4) base maintaining proper sole/level and raking out the joints with matching color cement/pigment, curing at least 7 days; all complete as per drawing, design and instruction of the authority/Engineer in charge.	sft	815		
12	Dismantling of mineral board false ceiling: Dismantling of existing mineral board ceiling (as instructed) carefully. These also include removal of the debris by the contractor to a suitable place. Precaution should be taken for the safety of other services (Electric, Machine, Hydraulic etc.) during dismantling removing & cleaning work. Mentionable here that before submitting this you are requested to physically visit the premises meticulously.	sft	8500		
13	Perforated metal false ceiling: New supply, fitting & fixing of imported perforated metal false ceiling (24"x24") over powder coated T-bar of section 1" x 1.5" and L-angle of section 1"x 1" at edge as per drawing, design and instruction of the authority/ Engineer in charge.	sft	7640		
14	Drop ceiling over 8'-0" height glass partition	rft	410		
15	Dismantling of board partition: Dismantling of existing board partition (as instructed) carefully. These also include removal of the debris by the contractor to a suitable place. Precaution should be taken for the safety of other services (Electric, Machine, Hydraulic etc.) during dismantling removing & cleaning work. Mentionable here that before submitting this you are requested to physically visit the premises meticulously.	job	1		
16	Gypsum Board Partition: New supply fitting fixing board partition which made of 12 mm gypsum/plain partex board, C-channel, U-channel and screwed to RCC slab including plastic paint etc. all complete as per drawing/design & instruction of the authority/Engineer-in-charge.	sft	1450		

Schedule for construction and interior decoration work at level-9, AB Bank HO, BCIC Bhaban

17	Board Paneling: Supply fitting fixing board paneling made of 12 mm gypsum/plain partex board, C-channel, U-channel and screwed to RCC slab including plastic paint etc. all complete as per drawing/design & instruction of the authority/Engineer-in-charge.	sft	1280		
18	Fixed ceiling: Supplying, fitting/fixing false ceiling made of Gypsum Board suspended from RCC ceiling by 12SWG GI wire, screwed to RCC slab & including plastic paint etc. all complete as per drawing/design & instruction of the authority/Engineer-in-charge.	sft	3580		
	Plastic paint (roller finish): Plastic paint (Berger brand) of approved color to/on plastered and others surfaces minimum 3 coats by roller finish after necessary lime putty work, cleaning, sand papering the base surfaces of wall treatment, including supply of all materials etc. all complete as per instruction of the authority/Engineer-in-charge.	sft	5500		
19	Enamel paint: Enamel paint (Berger brand) of approved color minimum 3 coats by spray/brush finish after necessary putty work, cleaning, sand papering the surfaces, treatment, including supply of all materials etc. all complete in all respect as per instruction of the authority/Engineer-in-charge.	sft	2250		
20	TUBE LIGHT (SINGLE): New supply, fitting & fixing of Led 18 watt T5 light (Brand: PASHA) including all accessories, all complete as per drawing and direction the authority/Engineer in-charge.	nos	275		
21	Down light: Supply, fitting & fixing of locally available 18 watt 6" LED down Light (Brand: PASHA) of approved color & size including conceal type shade of approved quality with all other necessary accessories etc. all complete up to testing & commissioning as per full satisfaction of the authority i.e. AB Bank PLC.	nos	95		

Schedule for construction and interior decoration work at level-9, AB Bank HO, BCIC Bhaban

22	Panel Light: Supply, fitting & fixing of- 2' x 2' locally available 48 watt Panel light (Brand: PASHA, Warranty-02 years) of approved color & size of approved quality with all other necessary accessories etc. all complete up to testing & commissioning as per full satisfaction of the authority i.e. AB Bank PLC.	nos	125		
23	Exhaust Fan: Supply, fitting/ fixing 8" diameter exhaust Fan (National deluxe/ equivalent) with electrical connection for toilet & pantry; all complete as per drawing and direction of the authority/Engineer in-charge.	nos	11		
24	Wall Mounted Fan: Supply, fitting/ fixing wall mounted Fan (National deluxe/ equivalent) with electrical connection for pantry & locker room all complete as per drawing and direction of the authority/Engineer in-charge.	nos	8		
25	Cable tray: New supply, fitting & fixing of cable tray (W-400mmxD-150mm) which made of G.P sheet with tray cover with fitting accessories etc. all complete as per drawing and direction of the authority/Engineer in-charge.	meter	1250		
26	a) 3/4" dia PVC Pipe (with wall cutting and laying of pipe)	rft	15450		
	b) 1" dia PVC Pipe (with wall cutting and laying of pipe)	rft	7500		
	c) 3/4" dia flexible Pipe (do)	rft	12500		
	d) 1" dia flexible Pipe (do)	rft	1280		
27	MDB/ SDB BOARD: As per requirement of site	nos	12		
28	c) 3 Gang (1 way) switch	nos	35		
	d) 4 Gang (1 way) switch	nos	30		
	e) D.P switch	nos	2		

Schedule for construction and interior decoration work at level-9, AB Bank HO, BCIC Bhaban

29	b) 13A, 3 pin socket	nos	287		
30	a) 125A TP MCCB	nos	6		
	b) 63A TP MCCB	nos	8		
	c) 32A TP MCB	nos	25		
	d) 10A - 20A SP MCB	nos	75		
31	a) 1C X 1.5 rm BYA cable	coil	51		
	b) 1C X 2.5 rm BYA cable	coil	48		
	c) 1C X 4.0 rm BYA cable	coil	19		
	d) 4C X 25.0 rm NYY cable	meter	110		
32	a) 1.5 re BYA (Green)	coil	26		
33	b) 2.5 mm ² BYA (Green)	coil	29		
34	c) 4.0 mm ² BYA (Green)	coil	9		
35	d) 16.0 mm ² BYA (Green)	meter	110		
36	SS Sink: Supplying, fitting & fixing imported SS Sink (Singapore-Ocean) with R.C.C slab casting with 18 granite fixing etc. all necessary accessories, i.e. flexible connector pipe, waste water pipe and iron arms etc. all completed as per drawing and direction of the authority/Engineer in charge.	rft	16		
37	Pedestal Wash basin: Supply, fitting & fixing of wash basin (brand: RAK) suite: RAK Karala, type: pedestal, dimensions: 500 x 406 mm, weight: 21 kg, color: green, shape of basin: oval, overflow hole: yes of approved color with all fittings/accessories, i.e. flexible connector pipe, waste water pipe, iron arms etc. all completed as per drawing and direction of the authority/Engineer in charge.	nos	4		

Schedule for construction and interior decoration work at level-9, AB Bank HO, BCIC Bhaban

38	Counter Wash basin: Basin counter R.C.C casting with supplying, fitting & fixing of 18 mm imported marble with supply & fixing of wash basin (Brand: RAK) Model: Jessica in wash basin (04 nos) , wash basin Drop in dimensions: 530 x 435 mm Color: alpine white shape of basin: oval of approved color with all fittings/accessories, i.e. flexible connector pipe, waste water pipe, iron arms etc. all completed as per drawing and direction of the authority/Engineer in charge.	rft	25		
39	Angle stop cock: (Nazma/Sattar).	nos	30		
40	Sink cock: (Nazma/Sattar)	nos	1		
41	Grating (3"-5"), UPVC	nos	6		
42	Commode: Opening of existing commode & new supply, fitting & fixing of Commode with Lowdown of approved color (Brand: RAK, Model: Karala) Flush Type: Dual Flush, Color: Alpine White, Trap Type: S Trap, Trap way Type: Concealed, Seat Cover Options: ABS & Urea, Bowl Shape: Oval, Soft Close: Yes, Dimensions: 685 x 360mm, Weight: 32Kgwith all fitting accessories/materials, all completed as per drawing and direction of the authority/Engineer in charge.	nos	12		
43	Towel rail: Supply, fitting & fixing of best quality towel rail.	nos	5		
44	Paper holder: Supply, fitting & fixing of best quality soap case (Nazma/Sattar).	nos	12		
45	Pillar cock: (Nazma/Sattar).	nos	8		
46	Sink cock: (Nazma/Sattar)	nos	3		
47	Bib cock: (Nazma/Sattar).	nos	8		
48	Soap case: Supply, fitting & fixing of best quality soap case (Nazma/Sattar).	nos	9		
49	TOILET SHOWER: Supply, fitting & fixing of best quality toilet shower (Nazma/Sattar).	nos	12		

Schedule for construction and interior decoration work at level-9, AB Bank HO, BCIC Bhaban

	Sample will be approved by the competent authority.				
50	Sanitary piping for dining room with 4", 2", 1.5", 1", 3/4", 1/2" dia upvc piping work etc. all completed as per drawing and direction of the authority/Engineer in charge.	job	1		
51	Flush Door (with Frame): Dismantling and opening of existing flush door frame with shutter etc.; all completed as per drawing/design and direction of the authority/Engineer-in-charge. Door Size-3'-0"x7'-0"	job	1		
52	Flush Door (with Frame): Supplying & fitting/fixing Wooden Flush Door made of Garjan veneered particle board shutter (Star brand) & (5"x2½") Gamari wood frame including Hinge (Brass), Lock (Handle-Taiwan), SS Knob/Handle (Taiwan), Tower bolt (brass), all expose surfaces finished by enamel paint & at hidden faces pasted anti corrosive chemicals such as Enamel paint/Tar/Soil Oil etc.; all completed as per drawing/design and direction of the authority/Engineer-in-charge. Door Size-3'-0"x7'-0"	nos	16		
53	Frosted Paper work: New supply, fitting & fixing of frosted paper work	sft	650		
54	Roller blinds: Supplying, fitting/fixing of imported best quality roller blinds of approved sample & color with all imported accessories e.g. aluminum head rail, pvc coupling cod controlling chain, bottom weight plate, bottom chain all complete as per design/sample and instruction of authority/Engineer-in-charge.	sft	1272		

Schedule for construction and interior decoration work at level-9, AB Bank HO, BCIC Bhaban

55	<p>HO-IT Table with side unit (Table Size: L-6'-0", W-3'-0"; Side unit size: 3'-2"x2'-6"x16"): New supply, fitting & fixing of executive table with side table (L-1800 x 900) mm which made of (2x2) mm MS box leg with beam with heat paint finishing work 25mm melamine board (Partex star premium quality-White beach) with necessary electric wire managemnt system etc. all complete as per instruction of the Engineer In-Charge. Detaile design will be provide by the Bank Authority.</p>	nos	1		
56	<p>HO-IT CHAIR: New supply, fitting & fixing of executive chair with fabric seat & back support, high quality moving wheel with base and hand rest with 05 years replacement guarantee approved sample, quality and color including all complete as per direction of the authority in-charge. Mentionable here that chair should be purchased from Navana Furniture Ltd.</p>	nos	1		
57	<p>Executive Table with side unit (Table Size: L-5'-0", W-3'-0"; Side unit size: 3'-2"x2'-6"x16"): New supply, fitting & fixing of executive table with side table (L-1500 x 900) mm which made of (2x2) mm MS box leg with beam with heat paint finishing work 25mm melamine board (Partex star premium quality-White beach) with necessary electric wire managemnt system etc. all complete as per instruction of the Engineer In-Charge. Detaile design will be provide by the Bank Authority.</p>	nos	7		
58	<p>EXECUTIVE CHAIR: New supply, fitting & fixing of executive chair with fabric seat & back support, high quality moving wheel with base and hand rest with 05 years replacement guarantee approved sample, quality and color including all complete as per direction of the authority in-charge. Mentionable here that chair should be purchased from Navana Furniture Ltd.</p>	nos	7		

Schedule for construction and interior decoration work at level-9, AB Bank HO, BCIC Bhaban

59	Officer Table: New supply, fitting & fixing of officer's table (L-6000 x 1400) mm which made of (2x2) mm MS box leg with beam heat paint finishing work 25mm melamine board (Partex star premium quality-White beach) with low height (1'-2") fabric/glass partition with necessary support etc. all complete as per instruction of the Engineer In-Charge. Detaile design will be provide by the Bank Authority.	nos	7		
60	Officer Table: New supply, fitting & fixing of officer's table (L-3600 x 1400) mm which made of (2x2) mm MS box leg with beam heat paint finishing work 25mm melamine board (Partex star premium quality-White beach) with low height (1'-2") fabric/glass partition with necessary support etc. all complete as per instruction of the Engineer In-Charge. Detaile design will be provide by the Bank Authority.	nos	2		
61	Officer Table: New supply, fitting & fixing of officer's table (L-6000 x 700) mm which made of (2x2) mm MS box leg with beam heat paint finishing work 25mm melamine board (Partex star premium quality-White beach) with low height (1'-2") fabric/glass partition with necessary support etc. all complete as per instruction of the Engineer In-Charge. Each table should be identical to IT & e-biz division at level-9, BCIC Bhaban.	nos	4		
62	Officer Table: New supply, fitting & fixing of officer's table (L-3600 x 700) mm which made of (2x2) mm MS box leg with beam heat paint finishing work 25mm melamine board (Partex star premium quality-White beach) with low height (1'-2") fabric/glass partition with necessary support etc. all complete as per instruction of the Engineer In-Charge. Detaile design will be provide by the Bank Authority.	nos	3		

Schedule for construction and interior decoration work at level-9, AB Bank HO, BCIC Bhaban

63	Officer Table: New supply, fitting & fixing of officer's table (L-7200 x 1400) mm which made of (2x2) mm MS box leg with beam heat paint finishing work 25mm melamine board (Partex star premium quality-White beach) with low height (1'-2") fabric/glass partition with necessary support etc. all complete as per instruction of the Engineer In-Charge. Detaile design will be provide by the Bank Authority.	nos	2		
64	Officer Table: New supply, fitting & fixing of officer's table (L-7200 x 760) mm which made of (2x2) mm MS box leg with beam heat paint finishing work 25mm melamine board (Partex star premium quality-White beach) with low height (1'-2") fabric/glass partition with necessary support etc. all complete as per instruction of the Engineer In-Charge. Each table should be identical to IT & e-biz division at level-9, BCIC Bhaban.	nos	4		
65	OFFICER CHAIR: New supply, fitting & fixing of officer's chair with fabric seat & back support, high quality moving wheel with base and hand rest with 05 years replacement guarantee approved sample, quality and color including all complete as per direction of the authority in-charge. Each chair should be identical to IT division at level-9, BCIC Bhaban. Mentionable here that chair should be purchased from Navana Furniture Ltd.	nos	60		
66	Dining table: New supply, fitting/fixing of dining table (L-7'-0"x2'-0") which made of 18 mm melamine board (Partex star premium quality- Graphite Color) top with fitting angle with necessary others etc. all complete as per instruction of the Engineer In-Charge.	rft	43		
67	DINING CHAIR: New supply, fitting & fixing of dining chair with PVC seat & back support, high quality fixed leg with 05 years replacement guarantee approved sample, quality and color including all complete as per direction of the authority in-charge. Mentionable here that chair should be purchased from Navana Furniture Ltd.	nos	15		

Schedule for construction and interior decoration work at level-9, AB Bank HO, BCIC Bhaban

68	Reception table with side unit (Table Size: L-6'-0", W-2'-3"; Side unit size: 3'-2"x2'-6"x16"): New supply, fitting & fixing of reception table which made of 25mm gorjon veneer board with lacquer finishing with 10 mm glass top having side unit (3'-2" x 1'-4") etc. all complete as per instruction of the Engineer In-Charge.	nos	1		
69	Low Height cabinet (H-2'-6", D-1'-4"): New supply, fitting & fixing of Low Height cabinet (H-2'-6", D-1'-4") which made of 18 mm melamine board (Partex star premium quality-Graphite color) with all complete as per drawing, design & direction of the authority/Engineer-in-charge.	sft	440		
70	Full Height Cabinet (H-8'-0", D-1'-4"): New supply, fitting & fixing of Full Height cabinet (H-8'-0", D-1'-4") which made of 18 mm melamine board (Partex star premium quality-Graphite color) with necessary fitting accessories etc. all complete as per drawing, design & direction of the authority/Engineer-in-charge.	sft	850		
71	Double Sitter waiting sofa: New supply, fitting & fixing of double sitter waiting sofa which made of high quality fabric with back support with approved sample, quality and color Warranty: One year (01) all complete as per drawing and instruction of the authority/Engineer-in-charge.	nos	8		
72	Tea table: New supply, fitting & fixing of tea table (L-3'-0"xW-1'-6") which made of (1.5"x1.5") MS box leg with heat paint finishing 18 mm melamine board (Partex star premium quality-Graphite color) top with necessary accessories etc. all complete as per instruction of the Engineer In-Charge.	nos	3		
73	Mobile drawer (H-2'-1", D-1'-8"): New supply, fitting & fixing of mobile drawer unit (H-2'-1", D-1'-8") which made of 18 mm melamine board (Partex star premium quality-White beach) with central lock and high quality accessories etc. all complete as per drawing, design & direction of the authority/Engineer-in-charge.	nos	134		

Schedule for construction and interior decoration work at level-9, AB Bank HO, BCIC Bhaban

74	Steel Almirah/M.S Rack shifting work: Shifting and re-fitting of steel almirah/M.S Rack from level-9 to level-8 at safe place with all complete as per drawing, design & direction of the authority/Engineer-in-charge	sft	540		
75	Full Height Cabinet: Shifting, & re-fitting/fixing of full Height cabinet (H-8'-0", D-1'-4") made of 18 mm melamine board graphite color in different places of from level-9 BCIC bhaban to level-8 with all complete as per drawing, design & direction of the authority/Engineer-in-charge	sft	850		
76	Low Height Cabinet: Shifting, repairing & re-fitting/fixing of full Height cabinet (H-8'-0", D-1'-4") level-9 to level-8 at safe place with all complete as per drawing, design & direction of the authority/Engineer-in-charge.	sft	720		
77	Vault shifting: Shifting and re-fitting of vault (Iron safe) from Level-9 to level-8 BCIC Bhaban at a safe place with all complete as per drawing, design & direction of the authority/Engineer-in-charge	nos	5		
	1. 3'-0"x7'-0"-04 nos				
	2. 2'-0"x2'-6"-01 nos				
78	Window thai section repairing work: Existing thai section repairing, re-fitting/fixing, wheel and lock repairing and necessary work etc. all complete as per instruction of the authority-in-charge	job	1		
79	Vault repairing and lock fitting with shifting work	job	1		
80	Opening of existing officer desk and shifting it from level-9 to ground floor.	Job	1		
Total					

Schedule for construction and interior decoration work at level-9, AB Bank HO, BCIC Bhaban

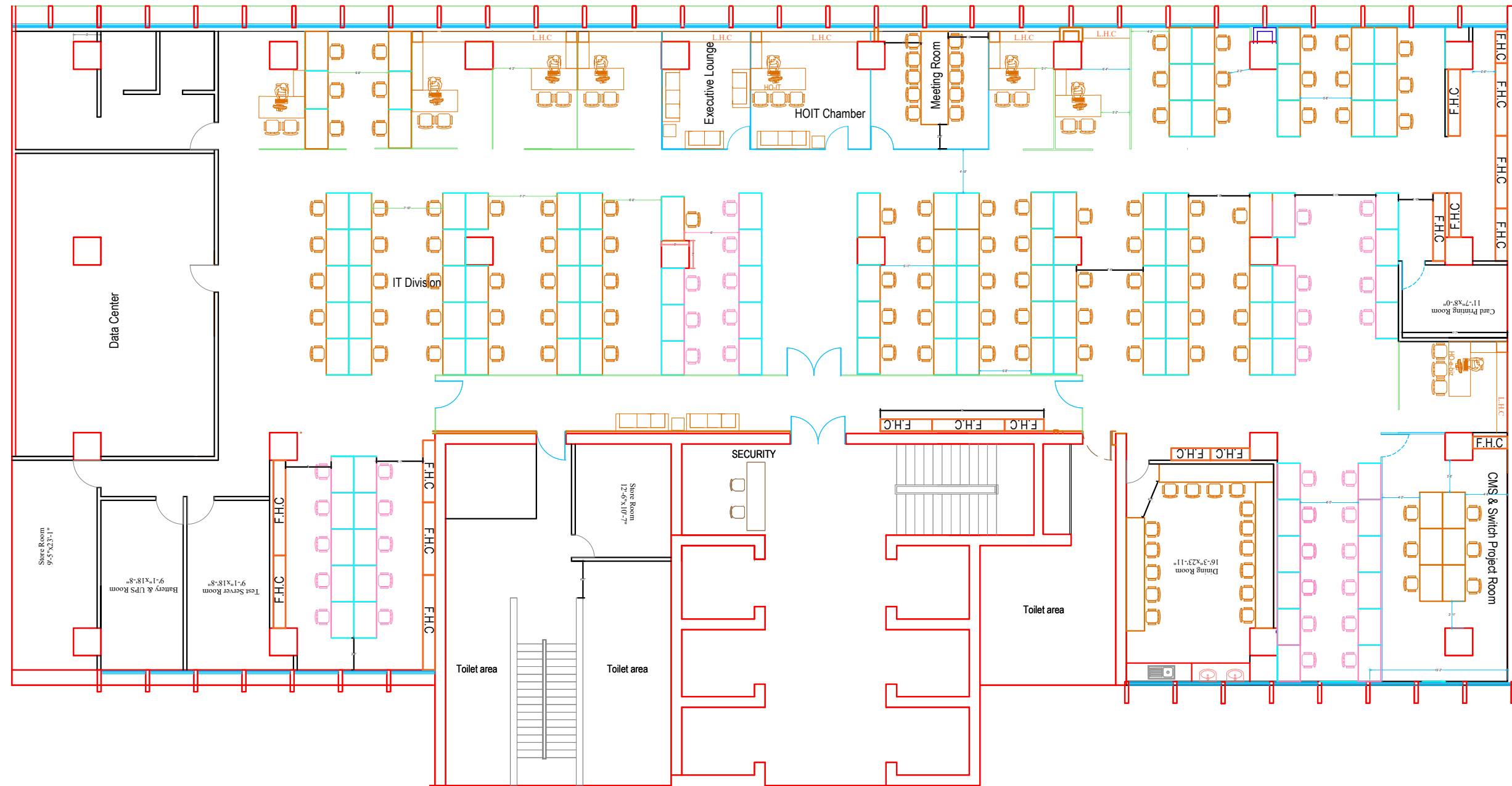
Terms & Conditions:

1. **Currency:** Price must be quoted in Bangladeshi Taka (BDT).
2. **VAT and TAX:** Quoted price must be inclusive of VAT and TAX as per government rules. Bill will be paid after deducting VAT and TAX as per Govt. rules of Bangladesh.
3. **Validity of the offer:** The proposal shall remain open and valid for a period of at least 45 (Forty Five) days from the specified closing date indicated in the RFP for receipt of proposals. Your proposal should indicate that it will remain valid for this period. If your proposal is accepted during this period, the price quoted in your proposal must remain unchanged for the entire period of the resulting contract.
4. **Submission of offer:** Proposal/offer is to be submitted in sealed envelope which will be dropped in the Tender Box at level-2, AB Bank HO, The Skymark, 18 Gulshan Avenue, Gulshan-1, Dhaka-1212 **by 12:30 pm on March 20, 2025**. The following wordings: **“Tender for construction and interior decoration work at level-9, AB Bank HO, BCIC Bhaban”** must be clearly written at the top of the envelope.
5. **Supervision:** Bank will supervise the interior fit-out work and will also check the quality and workmanship of the work. In the event of supply of any materials which do not match with the specified specifications or of substandard quality, the bank reserve the right for outright rejection of the goods and the supplier will have to take back and remove those at their own cost and will replace with acceptable quality materials within the shortest possible time from the date of rejection, without any extra cost or compensation.
6. **Workmanship Guarantee:** The Contractor is liable to a workmanship guarantee for a period of **six (06) months**. During this period of six months if any work done by the Contractor at his own cost. If not, the defective work will be done/repared though other agencies and the cost will be borne by the contractor.
7. **Authorized Signature on proposal:** Complete proposal/offer must be signed with date by the authorized representative of the company.
8. AB Bank PLC reserves the right to accept or rejection the proposal /offer without assigning any reasons thereof.
9. Manipulation or any kind of unusual approach or failure to submit the proposal/offer within stipulated time frame will be treated as “Disqualification” to participate in the bidding.
10. **Workmanship standards:** AB Bank PLC reserves the right to accept or reject any part of the work done by the contractor for poor workmanship or low standard of construction materials provided.

Schedule for construction and interior decoration work at level-9, AB Bank HO, BCIC Bhaban

11. **Sample Approval:** AB Bank will approve materials prior to use/installation of any materials by the successful bidder at the premises.
12. **Quality of work:** Work to be completed with standard specification and high quality finishing.
13. **Additional work beyond scheduled work:** No additional work beyond the schedule is allowable unless written instruction from Bank. Bank will not entertain any such bills at the time of settlement of bill.
14. **Eligibility of submission:** Please submit the below mention document along with the schedule:
 - a. Detail organization structure as per hierarchy including total number of technical / operational and administrative staffs
 - b. Up-to-date Trade License
 - c. TIN Certificate
 - d. VAT registration certificate
 - e. Up-to-date TAX payment receipt
 - f. Copy of work order with other organization
 - g. Experience certificate
 - h. Work completion certificate with other organization
 - i. Bank statement (Last 1 year) of the firm
 - j. Firm's balance sheet and statements of overall turnover
 - k. List of authorized persons of the company with copy of NID whom shall be contacted for subsequent correspondence by the Bank for issues after work order

All of you are requested to visit physically at level-9, AB Bank HO, BCIC Bhaban (Contact address: Corporate Office, BCIC Bhaban, 30-31 Dilkusha C/A, Dhaka 1000, Bangladesh) before submitting the quotation. Please contact with the Concern IT-officials (Cell-01711442124) should you have any queries or require any further information.



Total seating 134 nos (Officer desk-126 nos+Executive desk-07+Head-01)